


Exercise 7: Map authoring

Creating maps that show accurate and meaningful information is one of the key functionalities of any professional GIS. We'll see at a glance how to do this with gvSIG.

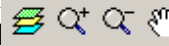
Create a Map document in the project

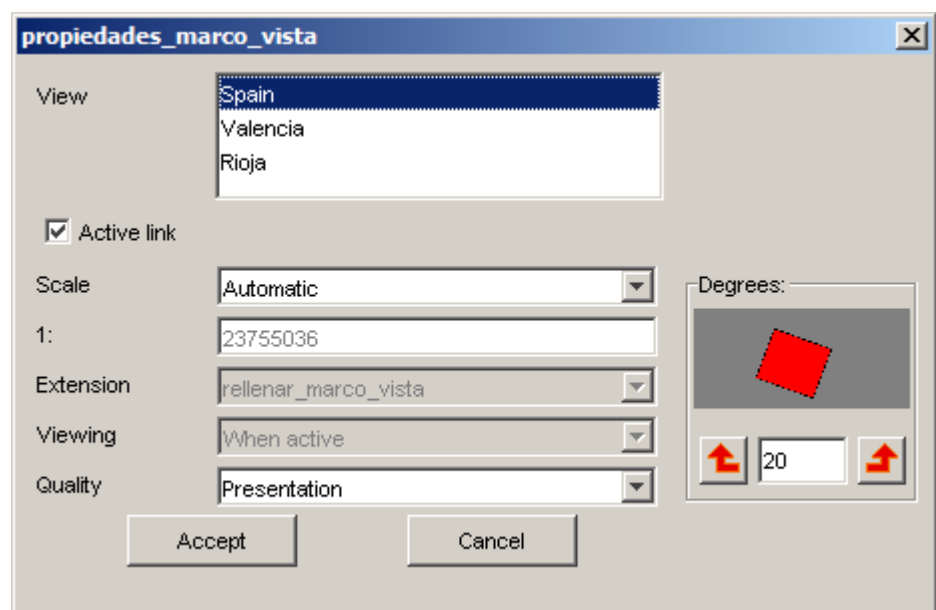
- *Open a project* you have previously saved with at least a couple of views
- In the Project Manager window, select the Map type of document and click on *New*. You can rename it as you did with Views.
- Double click on the map name or use the Open button to display the map layout canvas. Notice that a new *Map menu* and lots of new tools are now available.

Add Views to the map

- Click on the *Map/Insert/View* tool  and drag a rectangle on the map layout. You will see a dialog to select one of the views in your project. After you *accept*, the selected view will be displayed on the rectangle. You can repeat the same process with other views.
- You can navigate on the map layout using the map navigation tools:

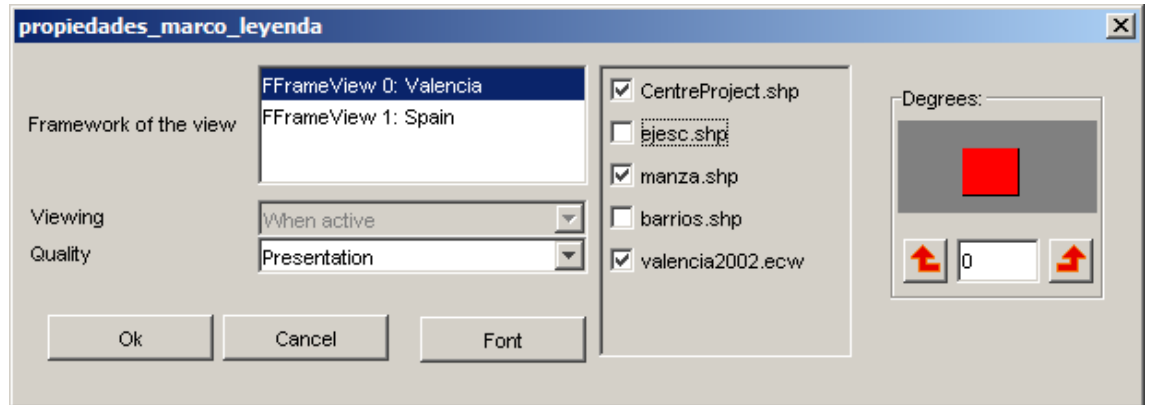


- You can also change the extent displayed within the views in the map by using the View Frame zoom tools (make sure the View is selected) 
- In addition, you can *Rotate* a view in the map. Select it and open the *Properties* by using the context menu on it (right mouse button). In the bottom right corner you can specify and preview the rotation angle.



Add legends to the map

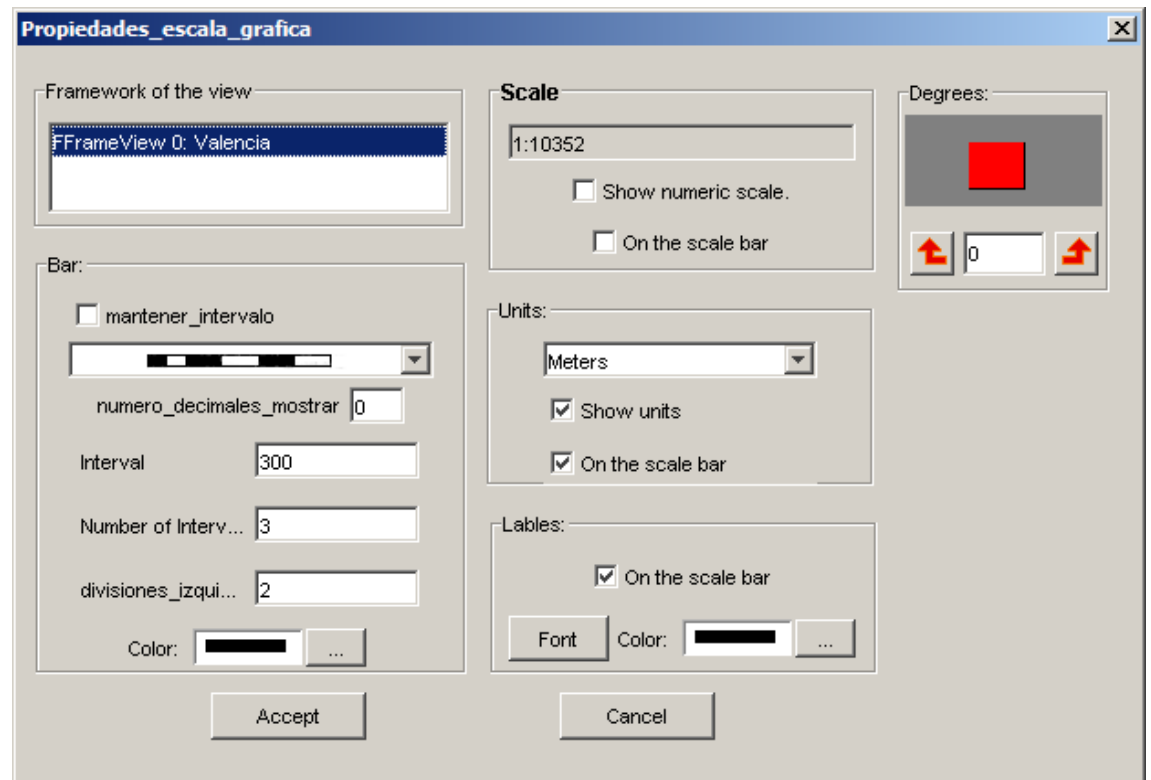
- You will typically add a legend to show what symbols are applied to the layers in your view. To do this, use the Add Legend tool and drag a rectangle. The following dialog will pop up to select the view and layers



- Once the legend is drawn, you can refine its design by working with its individual elements. To do this, select the legend and use the *Map / Graphics / Simplify legend* tool.

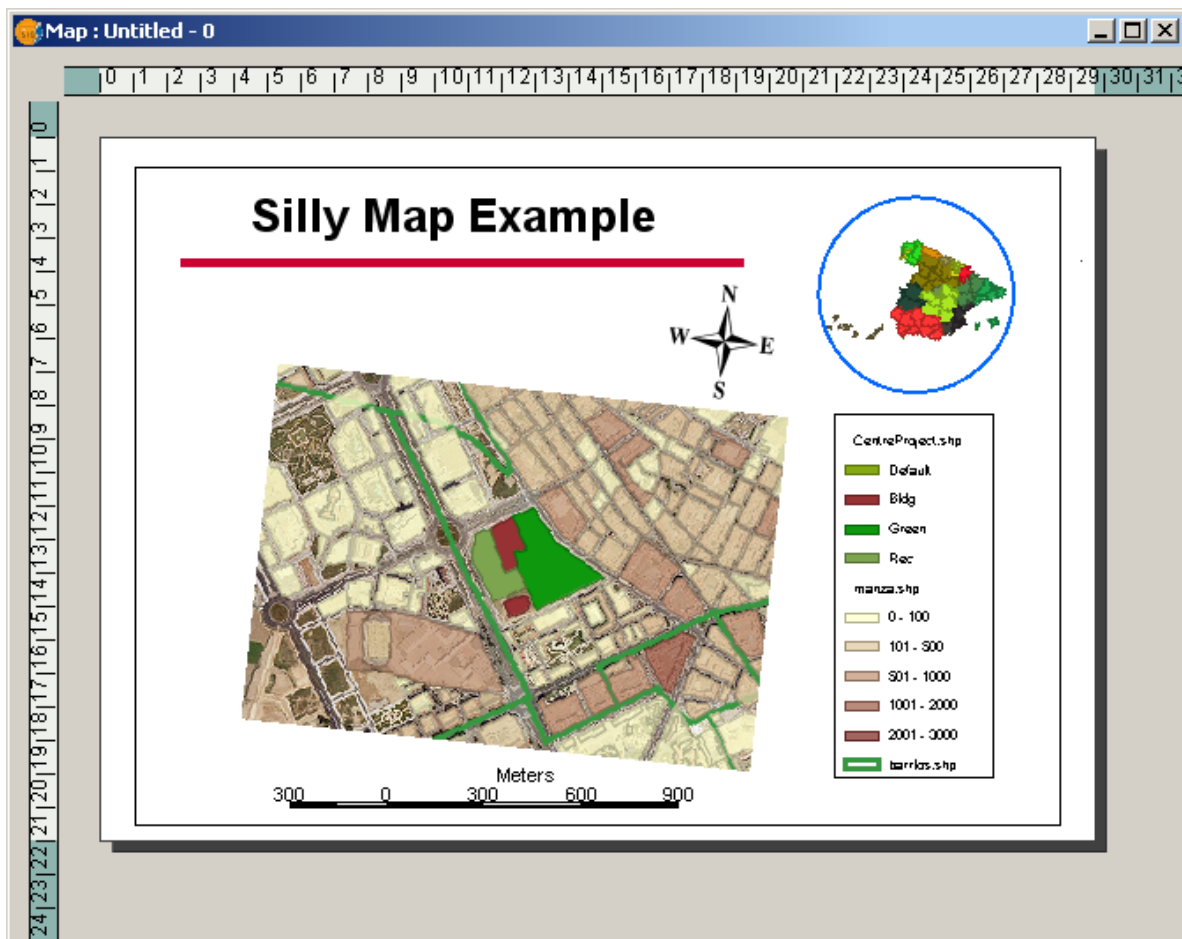
Other map elements

- A common map element is the Scale, associated to a view. You can add scales to the map by clicking on the scale tool and dragging a rectangle on the layout. The following dialog will let you choose some properties for the scale display:



- Another common element is a North Arrow, that can be added in the same way by clicking on the *north arrow tool*.
- You can also add to the map graphic elements like text, rectangles, lines, etc. by using the corresponding tools. You can also import image files.
- Map elements can be grouped or moved and their depth order changed by using the tools available for these operations.
- The properties of any map elements, like the color of a graphic element, can be modified by selecting it and using the *Properties* option in the context menu.

The following figure shows an example combination of most common map elements displayed in the layout.



Publishing and printing

- The map can be *exported* to PDF and PostScript formats by using the options under the File menu.
- It can also be printed by using the option under the Map menu.